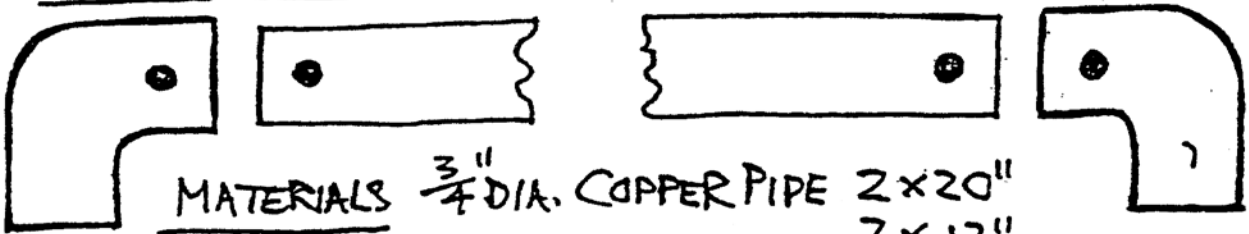
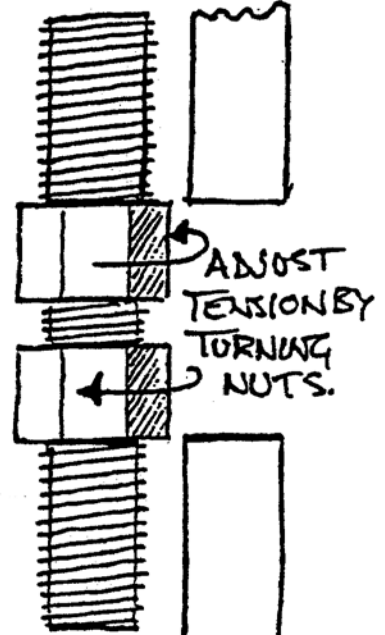
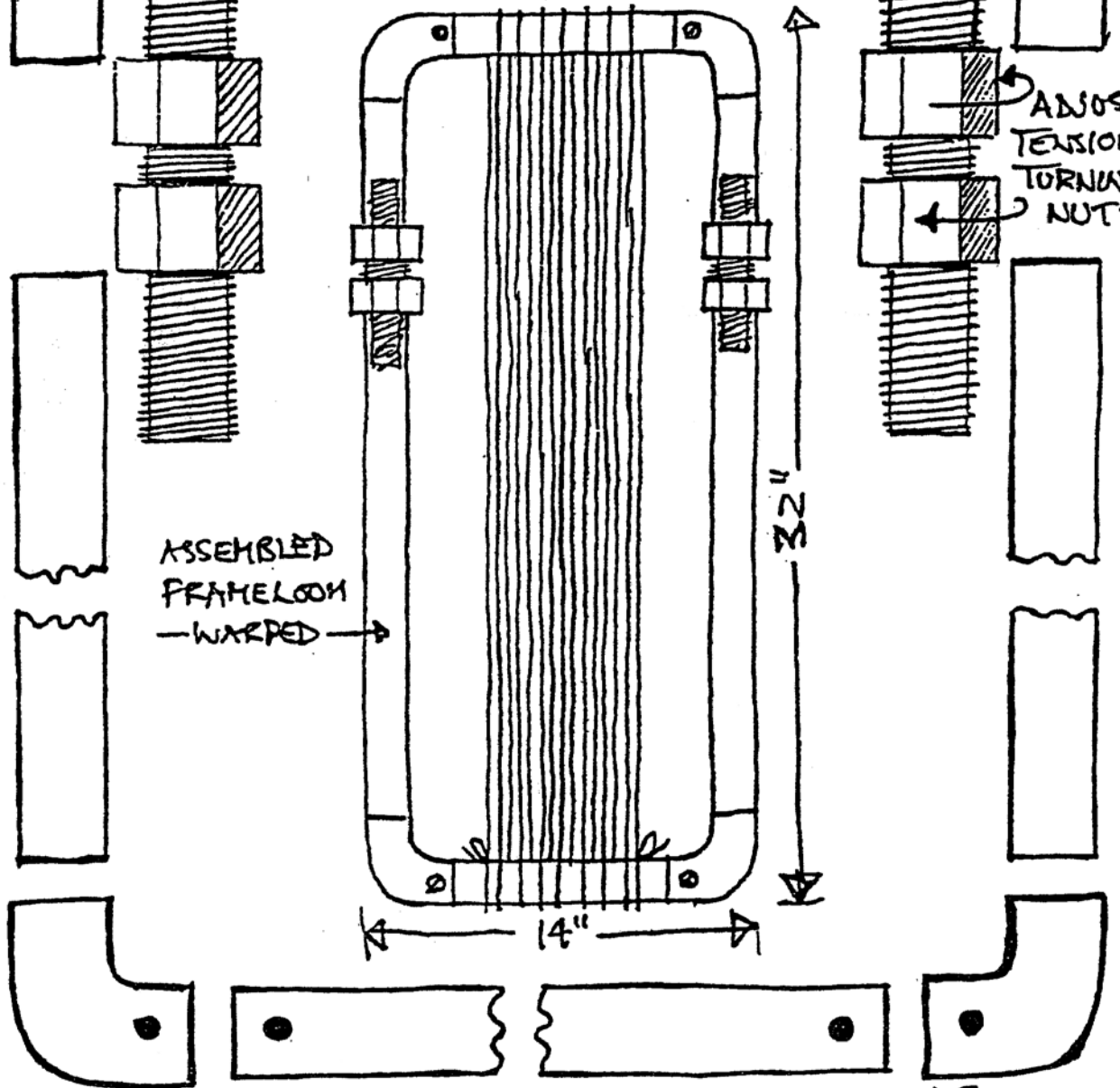
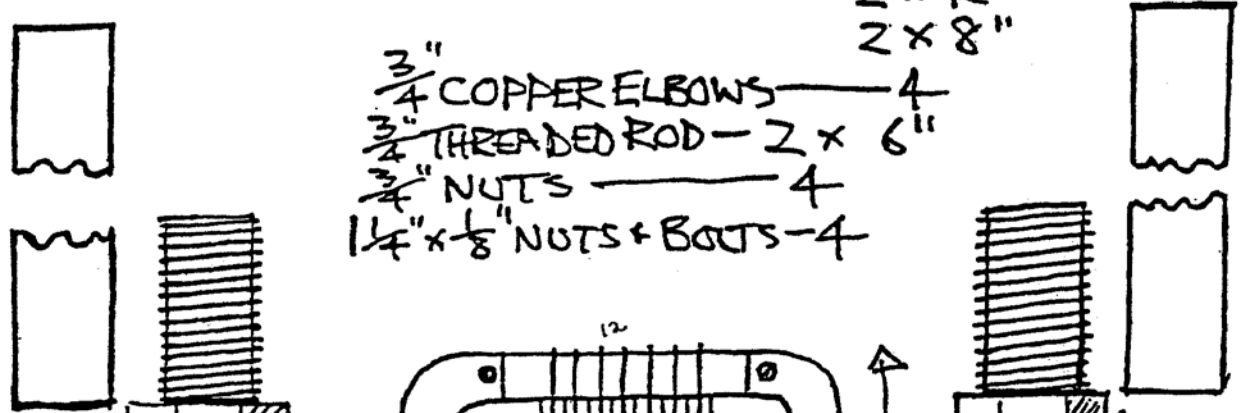


BASIC TAPESTRY FRAME WITH TENSION ADJUSTMENT.



MATERIALS $\frac{3}{4}$ " DIA. COPPER PIPE 2 x 20"
 2 x 12"
 2 x 8"

$\frac{3}{4}$ " COPPER ELBOWS — 4
 $\frac{3}{4}$ " THREADED ROD — 2 x 6"
 $\frac{3}{4}$ " NUTS — 4
 $1\frac{1}{4}$ " x $\frac{1}{8}$ " NUTS + BOOTS — 4



(A. Behrens)