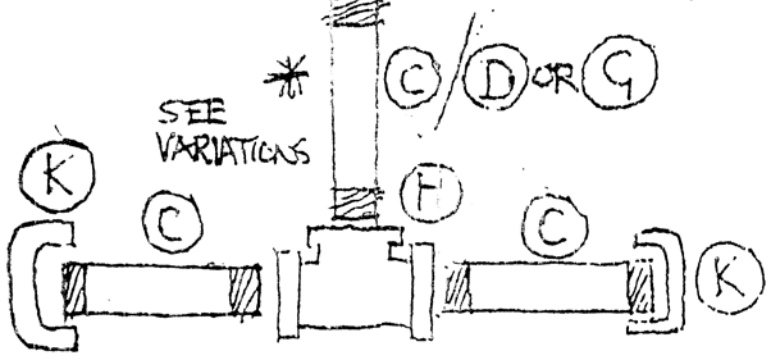
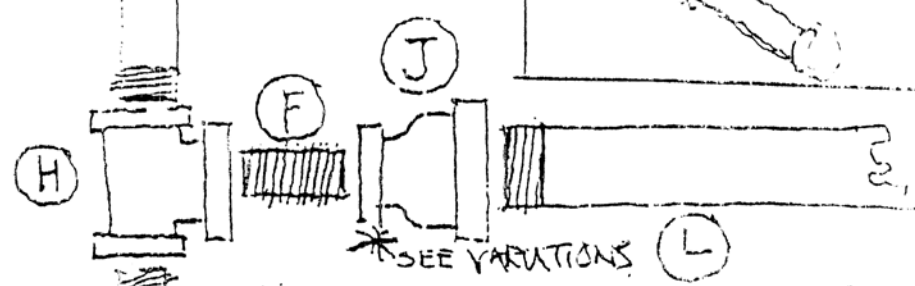
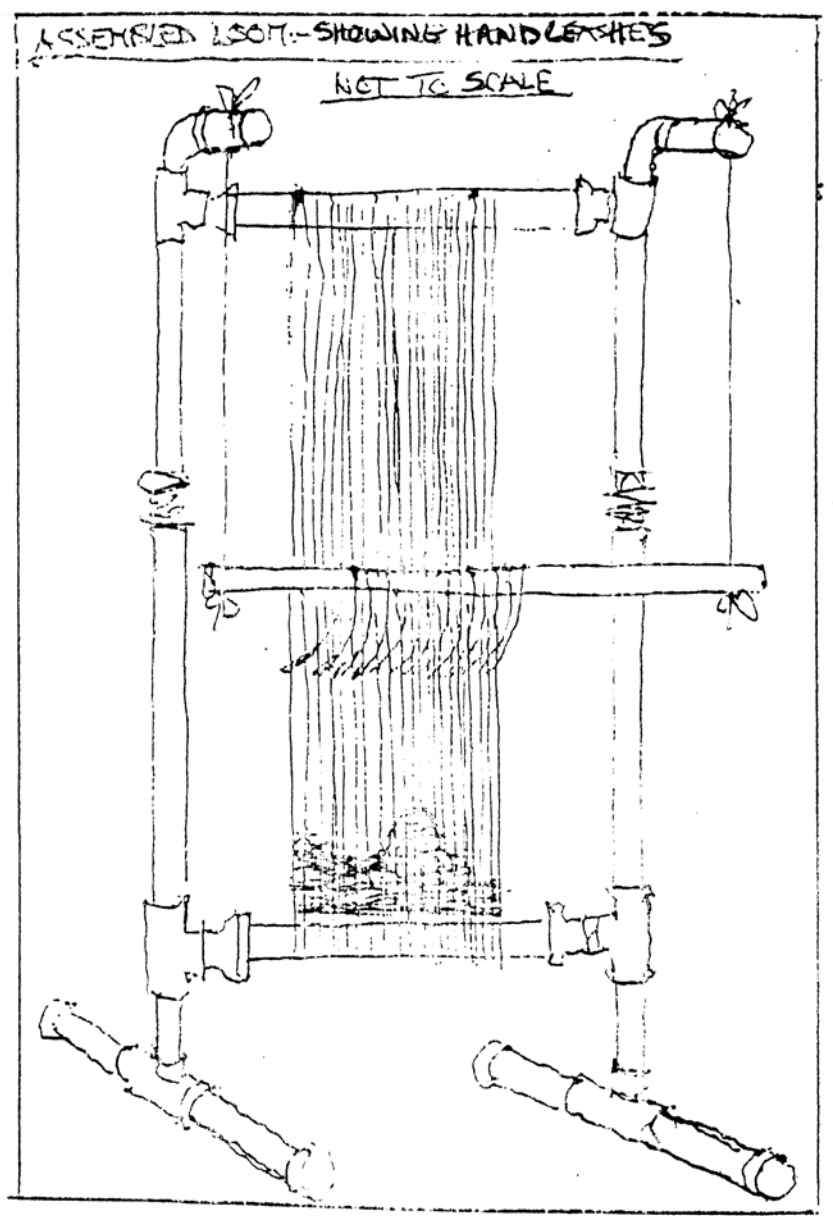
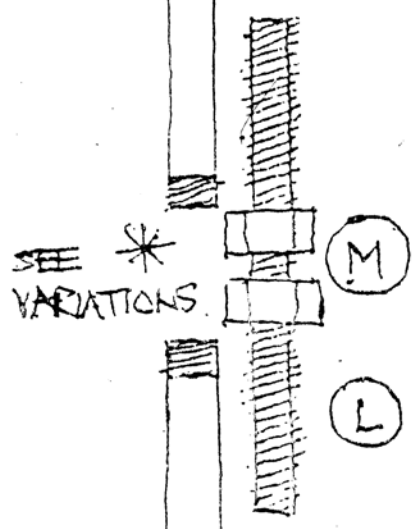
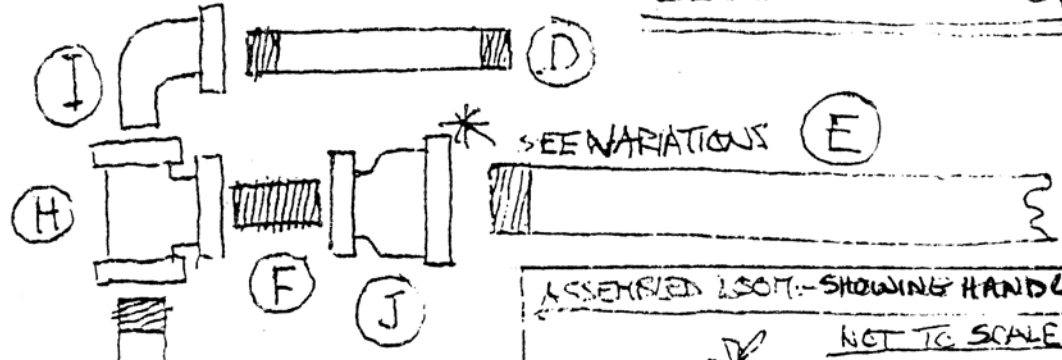


BLACK PIPE LOOM (TAPESTRY)



DRAWINGS NOT TO SCALE

EXPLODED DRAWING SHOWING CODED PARTS

CONSTRUCTING A FREE STANDING TAPESTRY LOOM, using standard black pipe plumbing parts, and offering a four feet wide weaving width. Dimensions are approx. 7 ft. x 4 1/2 ft. x 3 ft.

Materials required:

Black pipe at 1" inside diameter and threaded on both ends:

- a. 2 pipes 36" long
- b. 2 pipes 24" long
- c. 6 pipes 18" long
- d. 2 pipes 9" long

Black pipe at 1 1/4" inside diameter and threaded on both ends:

- e. 2 pipes 48" long

Threaded "linking" units at 1" outside diameter threaded both ends:

- f. 4 pipes at 3 " long
- g. 2 pipes at 2 " long

Various standard units needed:

- h. 6 "T" units for 1" diameter pipes
- i. 2 "L" units for 1" diameter pipes
- j. 4 adaptors for 1" to 1 1/4" change
- k. 4 plastic blanks 1" diameter
- l. 2 solid rods 18" long by 1" diameter.
- m. 4 nuts to fit 1" diameter threaded rod above.
- n. 1 wooden dowel 5ft. long and approx. 1 " diameter

note: a heavy plumber's wrench will be needed to assemble the loom, making matching dimensions of height and width.

